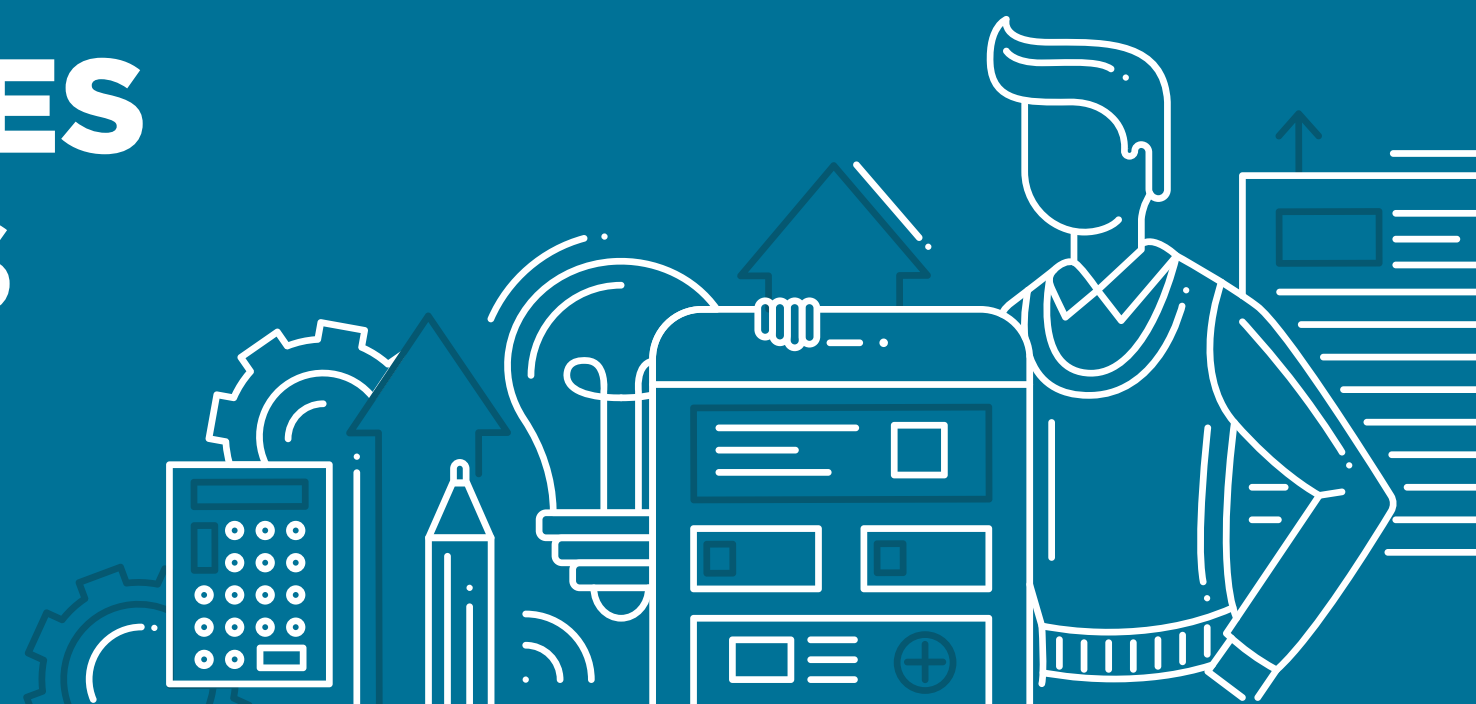


BUSINESS INSOLVENCIES AND INCORPORATIONS

The trend in the number of business insolvencies and incorporations is an indicator of investment and market conditions for entrepreneurs.



BC BUSINESS INSOLVENCIES
FELL BY 27.1%
WHILE BUSINESS INCORPORATIONS
INCREASED BY 6.2%
INDICATING A MORE STABLE CLIMATE

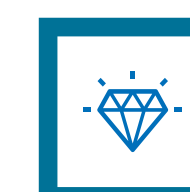
HIGHLIGHTS



NORTHEAST BC has had its ups and downs in terms of business incorporations, due to economic fluctuations, but business insolvencies have remained relatively low, indicating some stability.



The challenges faced by **CARIBOO'S** forestry industry in 2017 may have contributed to the increase in business insolvencies.



Over the past 5 years, **THOMPSON-OKANAGAN'S** business insolvencies fell by almost 75% while incorporations increased by almost 37%, reflecting business confidence and optimism.

NUMBER OF BUSINESS INSOLVENCIES VS. BUSINESS INCORPORATIONS

(Change in Number of Reports 2016 - 2017)

